

HOW TO PERFORM SURGICAL HAND WASH WITH ANTIMICROBIAL HIBIWASH®

Bonds to and cares for skin, whilst killing germs.

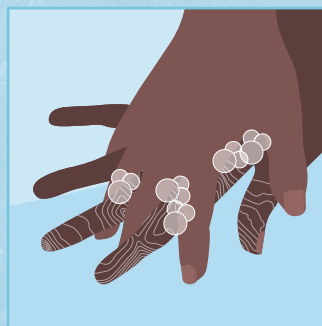
Hibiwash®
bonded to skin



Step 1: Wet the hands and forearms, apply 5ml of Hibiwash according to directions, palm to palm. Follow your hospital's protocol on the use of a brush or scraper for your nails and skin.



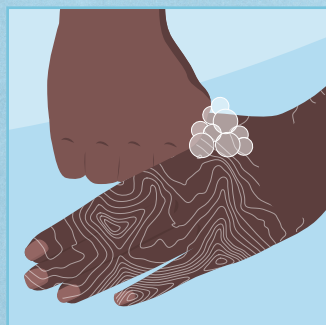
Step 2: Palm to palm over left dorsum; then left palm over right dorsum.



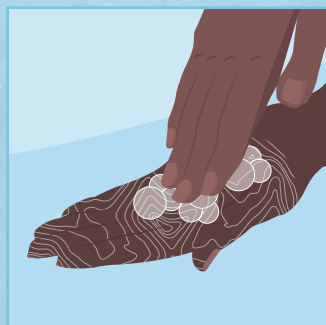
Step 3: Palm to palm, with fingers interlaced.



Step 4: Back of fingers to opposing palms with fingers interlocked.



Step 5: Rotational rubbing of right thumb clasped in left palm; and vice versa.



Step 6: Rotational rubbing, backwards and forwards with clasped fingers of right hand in left palm; and vice versa.



Step 7: Rub with each wrist clasped in the opposite hand.



Step 8: Rotational rubbing, to wash two-thirds of the forearms, to avoid comprising the cleanliness of the hands. Rinse then apply a further 5ml of Hibiwash and repeat the process.



With 4% w/v Chlorhexidine Gluconate

1. Gillespie B.M. 2021. Worldwide incidence of surgical site infections in general surgical patients: A systematic review and meta-analysis of 488,594 patients. International Journal of Surgery. 95, p.106136.

Mölnlycke Health Care Ltd, Unity House, Medlock Street, Oldham, OL1 3HS UK. Tel. 0800 731 1876 Email: ors.uk@molnlycke.com

The Mölnlycke and Hibi trademarks, name and logo types are registered globally to one or more of the Mölnlycke Health Care Group of Companies. © 2025 Mölnlycke Health Care AB. HQIM007760UK All rights reserved. Find out more at www.molnlycke.co.uk

Hibiwash® is your new surgical hand wash to help reduce the chance of surgical site infections.

Follow the our **step by step guide** to hand washing with Hibiwash®, along with your hospital's protocol.

Our NEW antimicrobial wash, with 4% Chlorhexidine Gluconate can be used for surgical hand washing before every operation.

Compared to the use of alcohol-based rubs, Hibiwash® can remove *C.difficile* and *C.auris* and reduce the risk of SSI's.

Help us to reduce the **11 in 100 chance** of a surgical site infection.¹

Together let's move towards zero.

Find out more at www.molnlycke.co.uk

Hibiwash® is a medicine, always read the package insert leaflet carefully, consult your physician, nurse or pharmacist and follow the hospital's protocol. Speak to your Mölnlycke contact person for the summary of product characteristics document.


Mölnlycke®