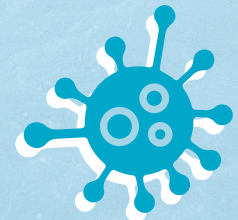


## DID YOU KNOW...?



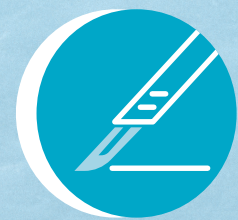
### YOUR SKIN CARRIES GERMS

THAT CAN CAUSE SURGICAL SITE INFECTIONS<sup>1</sup>



### 11 OUT OF 100

HOSPITAL PATIENTS DEVELOP A SURGICAL SITE INFECTION<sup>2</sup>



### 20 TO 30%

OF SURGICAL SITE INFECTIONS CAN BE PREVENTED<sup>3</sup>



### HIBIWASH® HAS NO FRAGRANCE

NO COLOUR AND NO TRACES OF SOYA OIL

## PREVENTING SSIs

### SSIs EXPLAINED

**Surgical site infections (or SSIs) are when an infection occurs on the skin or underlying tissue where hospital surgery has taken place. SSIs can prolong your hospital stay by six and a half days and could have a serious impact on your health and quality of life.**

### WHAT YOU CAN DO

The good news is you could help reduce the potential of infection by carefully washing your skin before and after hospital surgery with antimicrobial full-body Hibiwash®.

You can do your bit to help us reduce the **11 in 100 chance** of an SSI.

**Together let's move towards zero.**



## HIBIWASH®, PROTECTION WITH CERTAINTY

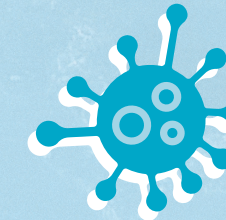
**Hibiwash® is a new antimicrobial face and full-body wash. It's been specially formulated to bond to and care for your skin while killing germs before and after surgery.**

It contains 4% Chlorhexidine Gluconate to form a protective coating that kills 94% of germs on your body the first time you use it, and for hours after washing.<sup>5,6</sup>



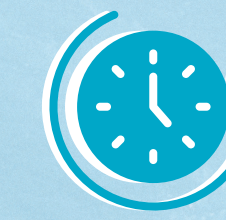
**HIBIWASH® BONDS TO AND CARES FOR SKIN**

## WHY USE HIBIWASH®?



### EFFECTIVE

SHOWERING THREE TIMES WITH 4% CHLORHEXIDINE GLUCONATE REDUCES SKIN GERMS BY 20 FOLD (2000%)<sup>7</sup>



### FAST-ACTING

HIBIWASH® FORMS A PROTECTIVE LAYER TO KILL GERMS WITH IMMEDIATE EFFECT AFTER APPLICATION<sup>8</sup>



### LONG-LASTING

YOU'RE CONTINUALLY PROTECTED FROM GERMS FOR HOURS AFTER USE<sup>9</sup>



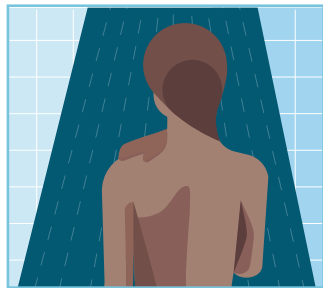
### GENTLE

HIBIWASH® CONTAINS EMOLLIENTS AND IS GENTLE TO THE SKIN, EVEN WHEN USED DAILY

## HOW TO USE FULL BODY HIBIWASH®

### EIGHT STEPS TO HEALTHY, PROTECTED SKIN

Use approx. 25ml of Hibiwash® on each washing. Cover your whole body properly with Hibiwash® for an effective reduction of the microorganisms.



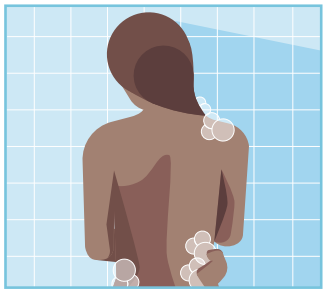
**STEP 1:** Rinse yourself and then switch off the shower.



**STEP 2:** Wash your face with undiluted Hibiwash®, especially around the nose – avoiding your nostrils, eyes and ears.



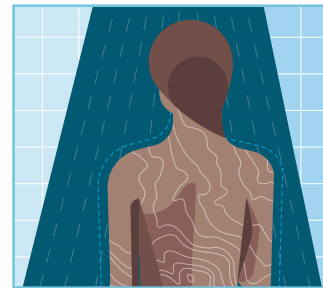
**STEP 3:** Using your hands working downwards, wash armpits.



**STEP 4:** Continue washing the whole body and legs and wash well around the groin area.

Help us to reduce the **11 in 100 chance** of a surgical site infection. Hibiwash® is an antimicrobial cleanser, strong on reducing the risk of infection and gentle on the skin. An easy-to-use solution that you can trust going into surgery.

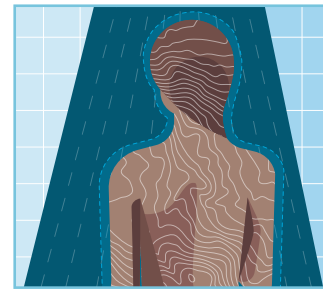
Together let's move towards zero.



**STEP 5:** After washing all these important areas, rinse off under the shower.



**STEP 6:** Now repeat steps 2 to 5, but this time starting with the hair.



**STEP 7:** After washing all these important areas, rinse off under the shower.



**STEP 8:** After final rinse, dry yourself thoroughly with a clean towel and put on clean clothes.

## THE SMALL PRINT

Hibiwash® is a medicine, always read the package insert leaflet carefully, consult your physician, nurse or pharmacist and follow the hospital's protocol.

### CONTRAINDICATIONS/DO NOT USE.

Hibiwash® contains 4% w/v Chlorhexidine Gluconate. If you are allergic to Chlorhexidine Gluconate or any other ingredient in this medicine, do not use this medicinal product.

### WARNINGS

Keep out of the eyes, nose and avoid contact with the brain, meninges, middle ear, mouth and other mucosae. For external use only. This medicine should not be swallowed. In the event of accidental contact with eyes or ears it is recommended to wash out promptly and thoroughly with water. In patients with head or spinal injuries or perforated ear drum the benefit of use in pre-operative preparation should be evaluated against the risk of contact. Hibiwash® should not be used in case of deep and extensive wounds. Do not inject or use in body cavities. Remove any soaked materials, drapes or gowns before proceeding with the intervention. Do not use excessive quantities and do not allow the solution to pool in skin folds or under the patient or drip on sheets or other material in direct contact with the patient. Hibiwash® is flammable. Do not use with electrocautery procedure or other ignition sources until dry. Do not use for disinfecting surgical materials. Paediatric population: The use of chlorhexidine solutions, both alcohol-based and aqueous, for skin antisepsis prior to invasive procedures has been associated with irritation or chemical burns to neonates. Use with care in premature infants or infants under two months of age.

### AFTER WASHING WITH HIBIWASH®

Don't use any creams, powders, oils, hair care products, deodorants, perfumes, make-up, nail polish, jewellery. They may reduce the efficacy of the product.

1. Brode L. 1976. Wound infections in clean and potentially contaminated surgery. Acta Chir Scand, 142: 191-200. 2. Gillespie B.M. 2021. Worldwide incidence of surgical site infections in general surgical patients: A systematic review and meta-analysis of 488,594 patients. International Journal of Surgery, 95, p.106136. 3. European Centre for Disease Prevention and Control. Annual Epidemiological Report 2016 – Surgical site infections. [Internet] Stockholm: ECDC; 2016. Available from: <https://www.ecdc.europa.eu/en/publications-data/healthcare-associated-infections-surgical-site-infections-annual-0> 4. Summary of product characteristics (SmPC) for HibiWash UK. 5. Byrne DJ et al. Rationalizing whole body disinfection. Journal of Hospital Infection 1990; 15: 183-187. 6. Mölnlycke Internal Report REPR 1037. 7. Byrne DJ et al. Effects of whole-body disinfection on skin flora in patients undergoing elective surgery. Journal of Hospital Infection 1991; 17: 212-272. 8. Mölnlycke Internal Report REPR 1037. 9. Mölnlycke Internal Report REPR 1037.

Mölnlycke Health Care Ltd, Unity House, Medlock Street, Oldham, OL1 3HS UK. Tel. 0800 731 1876 Email: [ors.uk@molnlycke.com](mailto:ors.uk@molnlycke.com) The Mölnlycke and Hibi trademarks, name and logo types are registered globally to one or more of the Mölnlycke Health Care Group of Companies. © 2024 Mölnlycke Health Care AB. All rights reserved. HQIM005146UK. Date of first a Authorisation/Renewal of the Authorisation 23/10/2023. Date of Revision of the Text 23/10/2023.

FIND OUT MORE AT [WWW.MOLNLYCKE.CO.UK](http://WWW.MOLNLYCKE.CO.UK)

